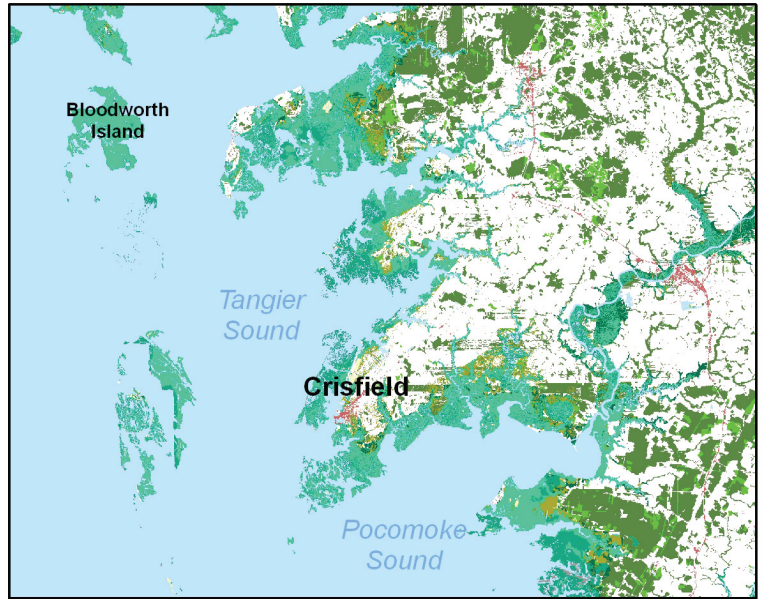
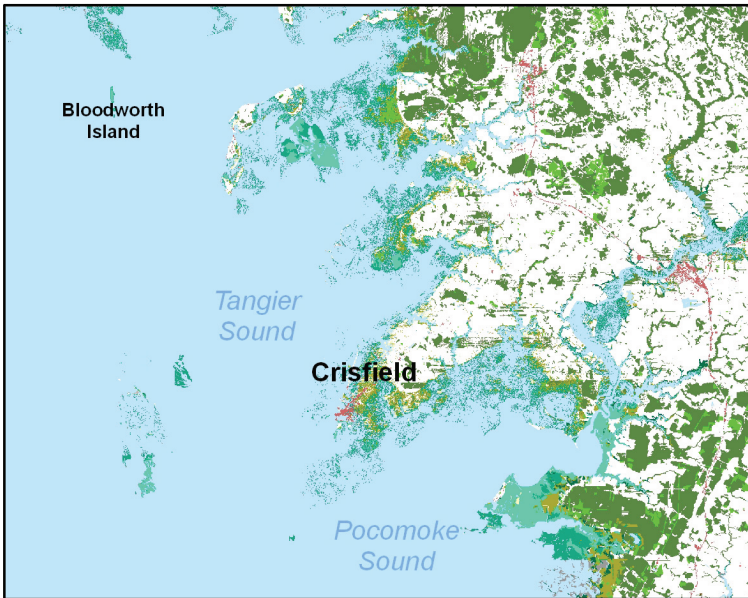


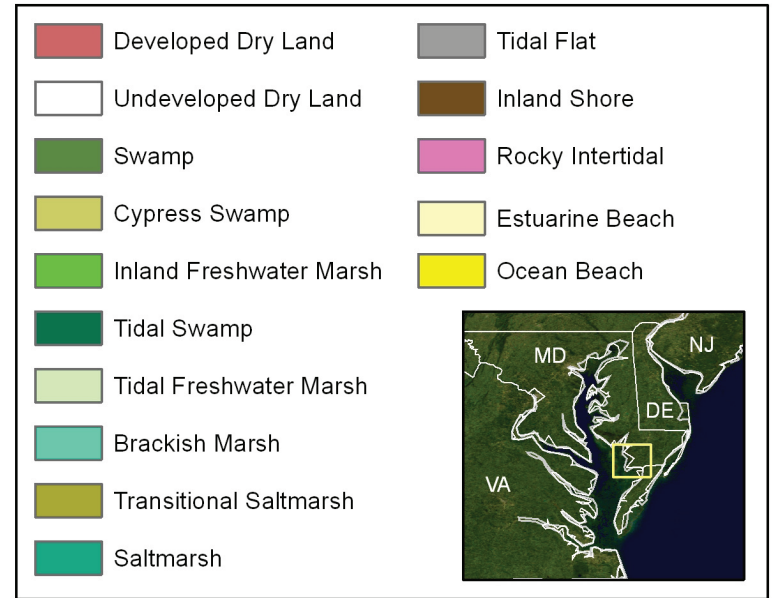
Initial Condition



Year 2050 (11.2 inches)



Year 2100 (27.2 inches)



Tangier Sound

Tangier Sound is home to some of the bay's larger islands--including Smith, Deal, and Tangier--the majority of which could be gone by 2100. Towns on the main land, like Crisfield, will also see surrounding wetlands disappear and undeveloped dry land inundated by rising seas. Thousands of acres of brackish marsh in this region will be converted to salt marsh and open water, possibly ravaging lucrative commercial and recreational fisheries that depend on healthy marshes. The critical seagrass beds in this area are also at significant risk from sea-level rise and increased deposition of sediments from the Blackwater area to the north.

Excerpted from *Sea-Level Rise and Coastal Habitats of the Chesapeake Bay*, a detailed modeling analysis commissioned by the National Wildlife Federation. For the full report, please visit www.nwf.org/sealevelrise.

