



## WILDLIFE CONFLICT RESOLUTION — HIGH DIVIDE — IDAHO

# Crooked Creek, Mahogany Butte, Cedar Point-Eightmile Grazing Agreements

Where conflicts between livestock and wildlife are prolonged and intractable, the National Wildlife Federation (NWF) believes that public land grazing retirements can provide an equitable solution for ranchers and wildlife interests. In coordination with federal land managers, we negotiate with livestock producers to retire livestock grazing allotments that experience chronic conflict with wildlife, especially wolves, grizzly bears, bison, and bighorn sheep. This market approach recognizes the economic value of livestock grazing permits and fairly compensates producers for retiring their leases. This approach establishes an important new national model for resolving conflicts between livestock and wildlife habitat.

### CONTACT

#### **Kit Fischer**

Senior Program Manager,  
Wildlife Conflict  
Resolution  
406-541-6731  
fischerk@nwf.org

#### **Sharon London**

Regional Philanthropy  
Director  
206-577-7173  
london@nwf.org

## The Next Opportunity

Crooked Creek, Mahogany butte and Cedar Point-Eightmile domestic sheep allotments are vast and include over 140,000 acres of prime sagebrush habitat in southern Idaho. For the past two years, the National Wildlife Federation has been working to reach an agreement on these three allotments as domestic sheep permitted on the allotments pose a significant risk of disease contact to wild bighorn sheep herds that reside in both the South Beaverhead and the South Lemhi Mountains. In addition, these allotments are within priority sage grouse habitat and are located within the “High Divide” wildlife corridor—critical habitat for expanding grizzly bear and wolf populations that are pioneering into new habitat along this unique East-West wildlife pathway. This agreement is unique in that Cedar Point-Eightmile will be retired, while Crooked Creek and Mahogany Butte will be converted to cattle grazing, although at a significantly reduced amount to benefit wildlife.



**WHERE: South Beaverhead and South Lemhi Range, Idaho**

**NEAREST TOWN: Hamer, ID**

**CONFLICT: Risk of disease contact between domestic and wild sheep, wolves, suitable grizzly habitat**

**ACRES: 143,000**

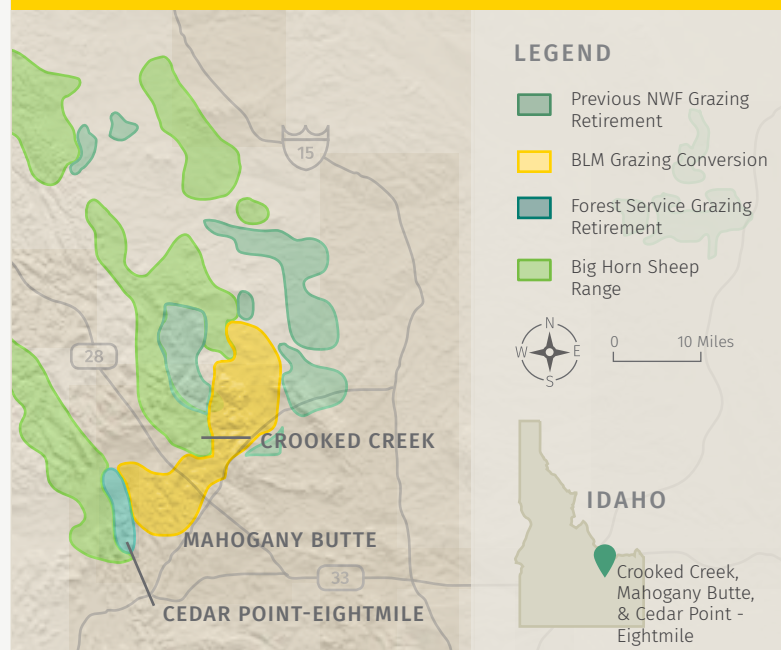
**AUMs\*: 2,765 AUMs Retired / 1,775 AUMs Converted from sheep to cattle**

**ANTICIPATED RETIREMENT DATE: July 2019**

**TOTAL ESTIMATED PRICE: \$364,980**

**\*AUMS (ANIMAL UNIT MONTHS) IS A STANDARD MEASUREMENT OF THE AMOUNT OF FORAGE USED TO FEED A COW/CALF OR FIVE SHEEP IN ONE MONTH.**

### PUBLIC LANDS, GRAZING ALLOTMENTS, AND BIGHORN SHEEP



#### PHOTO CREDITS

Page 1: Landscape (Pixabay); Top Bighorn Sheep (Doug Marcinski); Bottom Bighorn Sheep (Pixabay)

Page 2: Wolf (Alex Hughes)