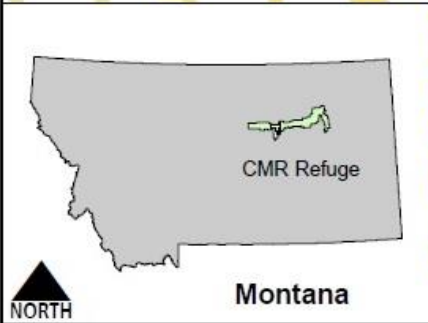
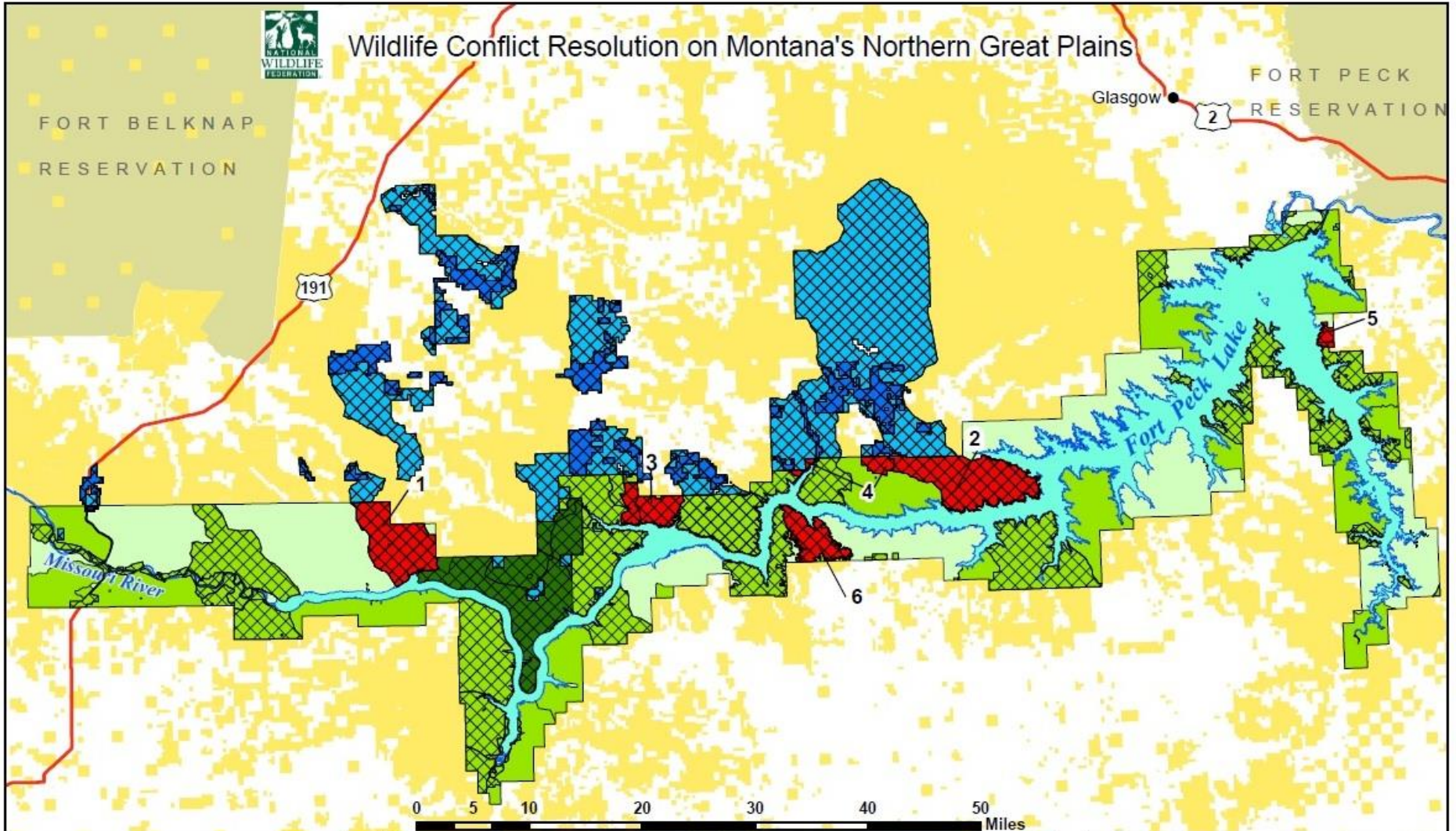




# Wildlife Conflict Resolution on Montana's Northern Great Plains



Map No.	Name of Agreement/Habitat Management Unit (HMU)**	Size [Acres]	Completion Date
1	Beauchamp Creek HMU	20,000	Nov 2009
2	Harpers Ridge East & West/Carpenter Creek HMU	25,000	Nov 2009
3	Lake Pasture/Kill Woman Creek HMU	7,000	Aug 2010
4	Bull & Bay Pastures/Carpenter Creek HMU	1,970	Dec 2010
5	Bay Pasture/Bobcat Creek HMU	1,291	Feb 2011
6	Billy Creek HMU	11,000	Jan 2015
<b>TOTAL Agreements [6]</b>		<b>66,261</b>	

\*\* US Fish & Wildlife Service's Management Subdivisions on the CMR.

**Legend**

- Lands without Wildlife Conflicts (689,935 acres)
- NWF CMR Grazing Agreements
- American Prairie Reserve (APR) Land
- APR Land (leased from BLM&State)
- UL Bend National Wildlife Refuge (closed to grazing)
- CMR Units Without Grazing
- CMR
- State and Federal Land
- Private Land